

December 2011

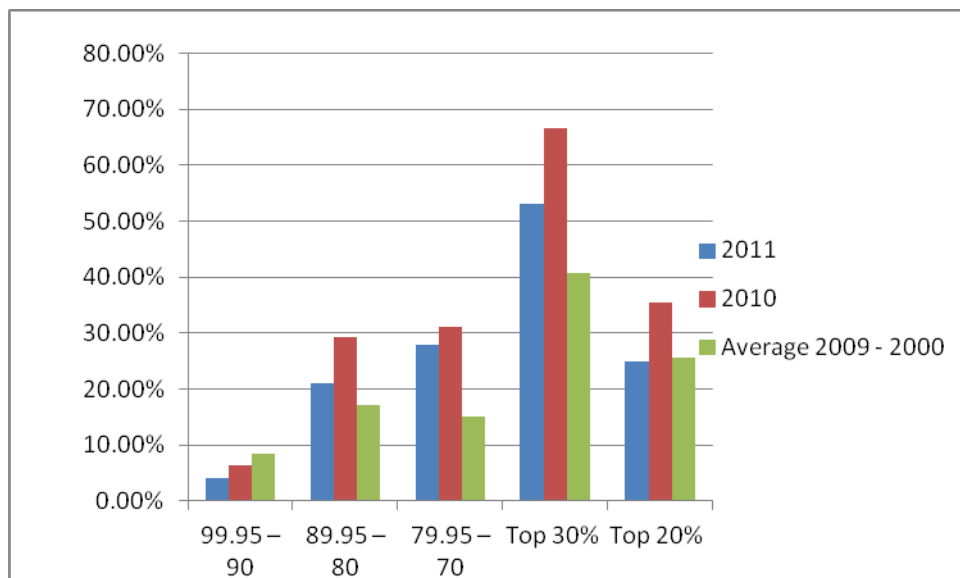
Dear Parents

## VCE Results 2011

- **Long-term upward trend continues**
- **Excellent achievement by students of all abilities**
- **Middle range students well ahead of state averages**
- **53% of all students in top 30% of state**
- **86% of all students in top 50% of the State**
- **40+ scores in six subjects**
- **Year 11 students excel in accelerated studies**

This year's VCE results at Alphington Grammar continue the long-term upward trend that began in 2000. While not quite matching last year's record achievements, our students have performed strongly across a wide range of subjects and abilities. Compared to the average for the years 2000 to 2009, the percentage of students gaining Tertiary Entrance (ATAR) scores in the top 30% of the state this year was up by over twelve points (see tables below).

ATAR	2011	2010	Average 2009 - 2000
99.95 – 90	4.0%	6.3%	8.5%
89.95 – 80	21.0%	29.2%	17.2%
79.95 – 70	28.0%	31.2%	15.1%
Top 30%	53.0%	66.7%	40.8%
Top 20%	25.0%	35.4%	25.7%



The average Tertiary Entrance (ATAR) score for Year 12 students at Alphington Grammar was 66.7 (the state average is 50). 53% of our students have been ranked in the top 30% in the state, with 57% of local students achieving this level. Overall 86% of our students were ranked in the top 50% of all Victorian students.

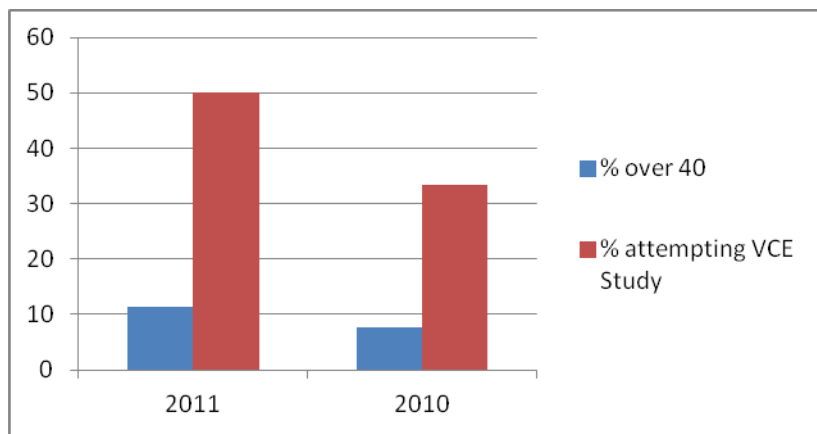
International Studies students excelled, gaining a median study score of 35 for the subject, followed by Psychology on a median score of 34, Art on 33 and Biology and English on 32.

These results mean that many students whose academic ability is middling or better have clearly exceeded their targets, and that more and more students will be able to gain entry to their preferred tertiary studies and to take the career path of their choice.

Our strongest performer this year in **Modern Greek** was Ioanna Yiannourakou Lianidou, with a study score of 44 (out of 50), followed by Pantelis Vasileiadis who scored 40. Both these scores fall within the top 8% of the state. **Dux of the school** for 2011 is Emily Gibney, the School Captain, with an ATAR of 93.35. The next highest ATAR score was achieved by Yang (Andrew) Song with 92.50. I congratulate all these students on their outstanding results.

Particularly pleasing was the performance of Year 11 students who were accelerated into Year 12 subjects. The proportion of Year 11s at Alphington Grammar attempting a Year 12 subject rose to 50% this year. Of these over 11% achieved study scores in the 40s. Both these figures are well ahead of those from 2010 (see tables below) and augur well for VCE results in 2012.

	2010	2011
% over 40	7.7	11.4
% attempting VCE Study	33.3	50.0



I will be in touch early next year with a summary of tertiary entrance offers for the class of 2011. In the meantime I wish you all a very happy Christmas and a wonderful start to 2012.

**Mike Smith**  
Principal